

A Case of Acromegaly with twin pregnancy and successful outcome

Santanu Acharya, Debashish Chatterjee, Biswajyoti Guha, Soumen Sasmal, Nilanjan Sengupta, Anil Ghosh

Dept. of G & O, Institute of Post Graduate Medical Education and Research & S.S.K.M. Hospital 244, A.J.C. Bose Road, Calcutta - 700 020.

Somatotroph Adenoma of the anterior pituitary leads to Acromegaly with menstrual abnormality, galactorrhoea and infertility, usually the resultant effect of hyperprolactinaemia.

RRC, 27 years, married for 2 years, with expected date of delivery on 16.1.98 presented with facial and acral features suggestive of acromegaly which developed insiduously over 3 years. After treatment return of menstruation with or without ovulation may occur which happened in this particular case.

Here such a case of pregnancy was detected at 14 weeks when size of uterus was 20 weeks by bimanual examination. USG confirmed the presence of a binovular twin pregnancy. The patient was hospitalised and pregnancy continued with close monitoring of the patient daily. She did not have any complications during pregnancy except for diffuse persistent headache.

She had sudden onset of labour pain on 9.12.97 at 11.30 p.m. at 34 weeks of gestation and rupture of membranes occurred at 4 a.m. on 10.12.97. Emergency section was done at 6.30 a.m. on 10.12.97. The patient delivered 2 male babies, first one breech and second one vertex weighing 2.150 kg & 1.340 kg respectively. Mother and baby did well till the time of discharge and subsequent follow up.

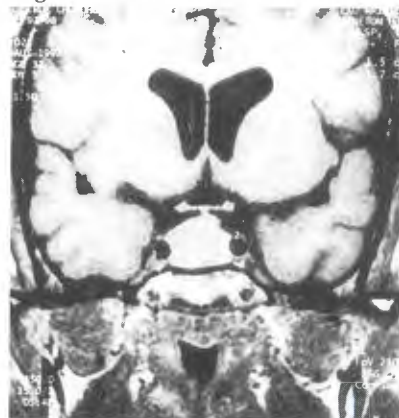
Prior to pregnancy she was treated with 40 mg. Bromocriptine which was reduced to 10mg intermittently during pregnancy.

Investigation reports are as follows :

X-ray skull, CT Scan and MRI showed that she had pituitary tumour with suprasellar extension upto the inferior aspect of optic chiasma causing compression of the infundibular stalk. The first two were done prior to pregnancy.



USG showing binovular twin of around 14 weeks gestation



MRI Coronal section showing pituitary adenoma with suprasellar extension

Perimetry showed concentric constriction of both visual fields.

Blood Hb% - 11.2 gm%, Blood Sugar - within normal limits, FSH - 52mU/ml, LH - 65 mU/ml, Prolactin - 44 ng/ml, T3 - 2.3 ng/ml, T4 - 120 ng/ml, TSH - 1.47/mU/lt, Cortisol - 6.8mg/dl, Na+ - 138 /meq/lt., K+ -3.8meq/lt, Human Growth Hormone - basal >40 ng/ml, Post glucose at 45 min - 33 ng/ml, at 60 min - 29 ng/ml, at 90 min -26 ng/ml.